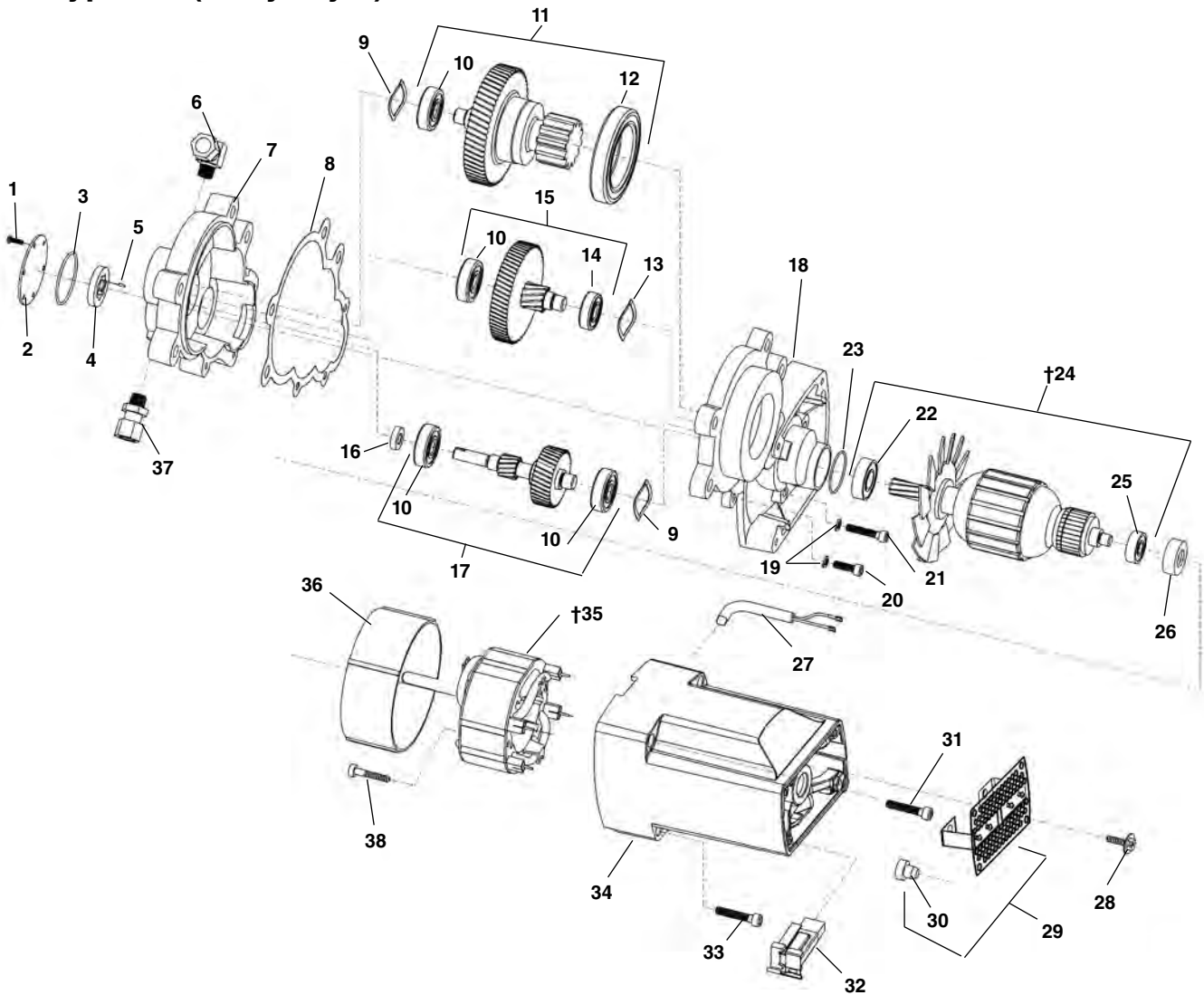


4194

Motor Type 2 – (Early Style)

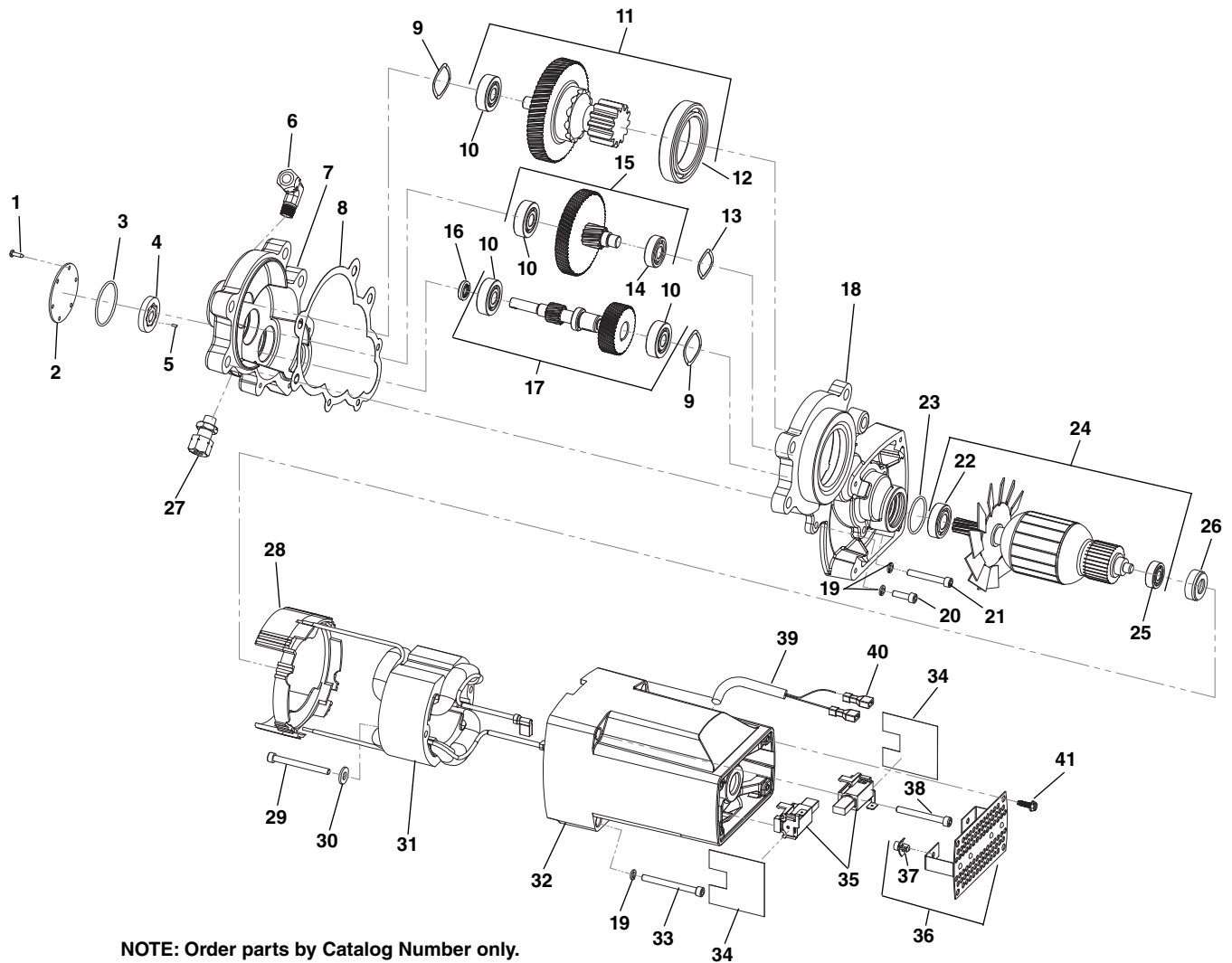


**NOTE: Order parts by Catalog Number only.
DO NOT order by Reference Number.**

Ref. No.	Catalog No.	Description	Ref. No.	Catalog No.	Description
—	58352	4194 Motor Assembly - 115V	20	58547	Screw 10-32 x 3/4" S.H.C.S.
1	96890	Screw 4-40 x 3/8" (6)	21	26642	Screw 10-32 x 1 1/4" S.H.C.S.
2	96840	Geroter Cover	22	60227	O-Ring
3	96875	O-Ring	23	45912	Bearing
4	96870	Geroter Set	†24	45907	Armature Assembly - 115V
5	96885	Geroter Pin	25	43017	Bearing
6	52517	90 degree fitting	26	42777	Rubber Bearing Mount
7	58492	Rear Gear Case	27	58562	Wiring Harness
8	58497	Gasket	28	10908	Screw Self Tapping (4)
9	58502	Wave Spring (2)	29	10913	End Cover
10	44760	Bearing (4)	30	10918	Bumper
11	58507	Drive Gear Assembly	31	10933	Screw #10-32 x 1 5/8" S.H.C.S.
12	58512	Bearing	32	34078	Brush Holder Assembly (2) 115V
13	35365	Wave Spring	33	10938	Screw #10-32 x 2" S.H.C.S. (5)
14	58522	Bearing	34	22048	Motor Housing
15	58527	2nd Gear Assembly	†35	45897	Field Assembly 115V
16	96880	Oil Seal	36	35328	Fan Shroud
17	58532	1st Gear Assembly	37	58582	Straight Fitting
18	58537	Front Gear Case	38	10923	Screw #10-24 x 2" S.H.C.S. (2)
19	58542	#10 Lock Washer (3)			

† Service Note: When replacing early style 100V, 115V or 230V armature# or field# you must replace with both new style armature#, field# and brushes#.

Motor Type 2 – Motors built after Serial Number EAH XXXX 1109



**NOTE: Order parts by Catalog Number only.
DO NOT order by Reference Number.**

Ref. No.	Catalog No.	Description	Ref. No.	Catalog No.	Description
—	58352	4194 Motor Assembly - 115V	22	45912	Bearing
—	58347	Motor Assembly EU -230V	23	60227	O-Ring
1	96890	Screw 4-40 x 3/8" (6)	24	40943	Armature Assembly - 115V
2	96840	Gerotor Gear Cover	25	40948	Armature Assembly - 230V
3	96875	O-Ring	26	43017	Bearing
4	96870	Gerotor Set	26	42777	Rubber Bearing Mount
5	96885	Gerotor Pin	27	58582	Straight Fitting
6	52517	90 Degree Fitting	28	35328	Fan Shroud
7	58492	Rear Gear Case	29	10923	Screw #10-24 x 2" S.H.C.S (2)
8	58497	Gasket	30	41592	#12 Flat Washer
9	58502	Wave Spring (2)	31	38848	Field Assembly 115V
10	44760	Bearing (4)	31	38853	Field Assembly 230V
11	58507	Drive Gear Assembly	32	22048	Motor Housing
12	58512	Bearing	33	10938	Screw #10-32 x 2" S.H.C.S (5)
13	35365	Wave Spring	34	39003	Shield (2)
14	58522	Bearing	35	34078	Brush Assembly 115V
15	58527	2nd Gear Assembly	35	34083	Brush Assembly 230V
16	96880	Oil Seal	36	10913	End Cover
17	58532	1st Gear Assembly	37	10918	Bumper (2)
18	58537	Front Gear Case	38	10933	Screw #10-32 x 1 3/4" S.H.C.S (5)
19	58542	#10 Lock washer (3)	39	58562	Wiring Harness
20	58547	Screw 10-32 x 3/4" S.H.C.S.	40	59007	Female Disconnect (2)
21	26642	Screw 10-32 x 1 3/4" S.H.C.S.	41	10908	Self Tapping Screw (4)